

Big Data Congress 2017

Using Data Technology to Improve Container Transit Times

Pat d'Entremont
Nicom IT Solutions
Halifax NS

Seaport Data Questions

Why does it take so long to get my container to Chicago?

What is the status of my container?

BTW, where is my container?

What is the shortest time to get from here to there?

Why can't I predict cargo delivery times better?

Container Dwell Time Management System



Container movement :

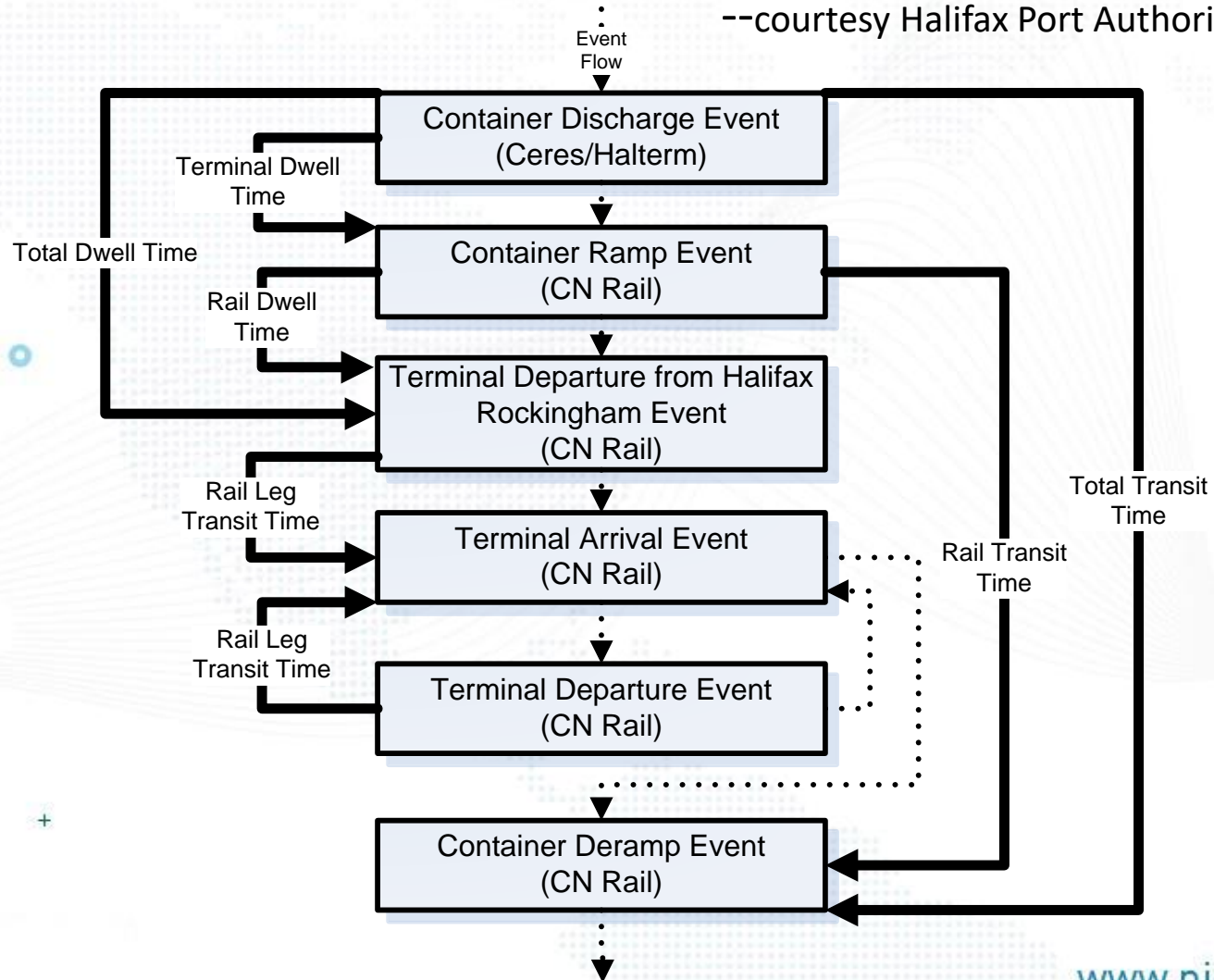
- Discharged from vessel
- Ramped on rail car
- Departed a terminal
- Arrived at a terminal
- Deramped from rail car
- Other data



- Dwell Time
- Transit Time
- Analysis reports
- Trend reports
- Reports on KPIs, Level of Service

Dwell Time and Transit Time Management at the Port of Halifax

--courtesy Halifax Port Authority



Container Dwell Time Management System

Results:

25-35% improvement within 1.5 years

New customers

AAPA award for “Improvements in Intermodal Freight Transportation”

At-a-Glance

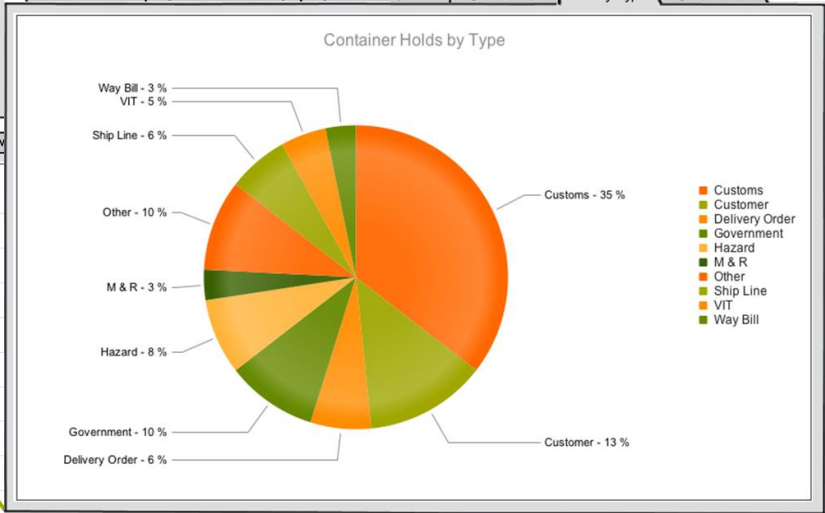
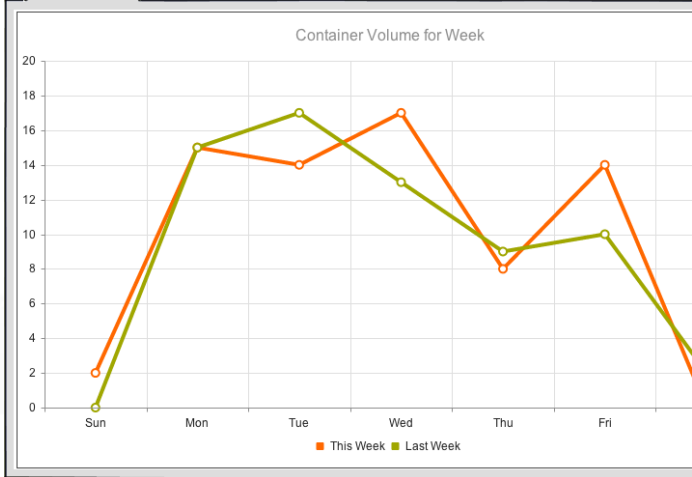
Owner:	Goal	Current	Prev	Var	
ALL	Average time to departed (hrs)	99	99	99	99
Terminal:	Average time to rail ready (hrs)	99	99	99	- 99
ALL	Average hold duration (hrs)	99	99	99	99
Container Initial:	Average total dwell (hrs)	99	99	99	99
ALL					
Period:	Number of containers arrived (count)	--	99	99	99
Custom	Number of containers departed (count)	--	99	99	99

From: 2012/05/01 To: 2012/06/30

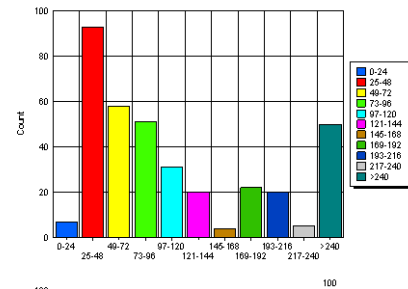
At-a-Glance

Owner:	Goal	Current	Prev	Var	Pct	
ALL	Average time to departed (hrs)	99	99	99	99	(99%)
Terminal:	Average time to rail ready (hrs)	99	99	99	- 99	(- 99%)
ALL	Average hold duration (hrs)	99	99	99	99	(99%)
Container Initial:	Average total dwell (hrs)	99	99	99	99	(99%)
ALL						
Period:	Number of containers arrived (count)	--	99	99	99	(99%)
Week	Number of containers departed (count)	--	99	99	99	(99%)

Container Volume | Avg Time to Rail Ready | Avg Time to Departed | Avg Hold Times | Holds by Type | Avg Total Dwell



73-96	51	(14.1%)	(57.89%)
97-120	31	(8.6%)	(66.48%)
121-144	20	(5.5%)	(72.02%)
145-168	4	(1.1%)	(73.13%)
169-192	22	(6.1%)	(79.22%)
193-216	20	(5.5%)	(84.76%)
217-240	5	(1.4%)	(86.15%)
>240	50	(13.9%)	(100.00%)
Total:	361		



CONTAINER TCNU229978

Inland mode of transportation: RAIL

Container size: 40

Events

Container TCNU229978 has been loaded onto rail car DTTX749254 in BRAINTTER on 23-SEP-2017 19:49 bound for Halifax to be loaded to ARISTOMENIS

Container TCNU229978 has departed BRAINTTER on train Q1120323 on 24-SEP-2017 00:10

Container TCNU229978 has arrived at ROCKINGHA on 25-SEP-2017 12:12

Container TCNU229978 has entered the gate at HALTERM on 26-SEP-2017 08:58 bound for the vessel ARISTOMENIS

Container TCNU229978 has been loaded onto the vessel ARISTOMENIS on 27-SEP-2017 22:42 at HALTERM

CLOSE

ALERTS

You can receive alerts as containers make their way through the Port of Halifax. Below are the alerts you can choose from. Simply check the alerts you wish to receive.

Import Alerts

- Container Discharged
- Container Loaded to Rail
- Container Departed Terminal
- Container Arrived at Destination
- Container Out by Truck

Export Alerts

- Container Loaded to Rail (Export)
- Container Arrived at Terminal
- Container In Gate
- Container Loaded to Vessel

Alert Options

How would you like to receive your alerts?

By SMS

Mobile #:

+1 (902)

CLOSE

SUBSCRIBE

Future

Data Dashboards

Sensors

Port Community Systems

More Analytics/BI processes

More mobility, cloud

NICOMIT

Pat d'Entremont
Nicom IT Solutions
Halifax

Microsoft
Partner

www.nicomit.com